



# 3M™ Nomad™ carpet matting 5000

**MEDIUM TRAFFIC ENTRANCE MATTING**

## INDOOR WIPER/SCRAPER

**3M™ Nomad™ Carpet Matting 5000** is an attractive and effective entrance matting for all moderate traffic facility applications. Crush-resistant polypropylene fibers scrape, remove and hide loose dirt. Vinyl backing resists creeping and curling to keep your mat where it needs to be.

## PERFECT FOR

LOBBIES  
HALLWAYS  
OFFICES  
SERVICE COUNTERS

### roll sizes

3 ft. (0.9 m.) x 60 ft. (18.2 m.)  
4 ft. (1.2 m.) x 60 ft. (18.2 m.)  
6 ft. (1.8 m.) x 60 ft. (18.2 m.)

### individual sizes

3' x 6', 3' x 10', 3' x 15',  
4' x 6', 4' x 10', 4' x 15',  
6' x 6', 6' x 10', 6' x 15'

Available in custom sizes

### face style

Level loop

### edging

Available

### total weight

2.88 kg./sq. m.  
(0.59 lbs./sq. ft.)

### thickness

5/16 in. (8 mm.)

### colour(s)

7 available

### warranty

1 year



 **edgewood**  
**matting**

edmonton  
vancouver  
toronto  
edgewoodgroup.ca

CALL FOR DETAILS OR TO REQUEST A SAMPLE

**1.800.668.1776**

P 780.466.2084 • F 780.468.9104  
E [inquiries@edgewoodgroup.ca](mailto:inquiries@edgewoodgroup.ca)

April 21, 2017



# 3M™ Nomad™ carpet matting 5000

face construction

Tufted loop pile

face material

Polypropylene

backing

Vinyl (PVC)

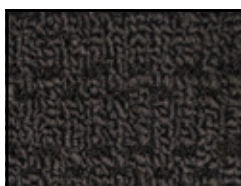
flammability

DOC FF 1-70: Passes

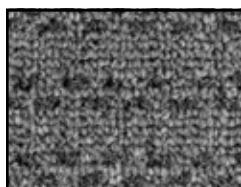
## SWATCHES



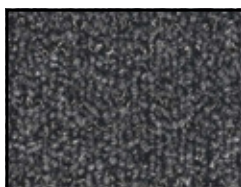
#10 BROWN



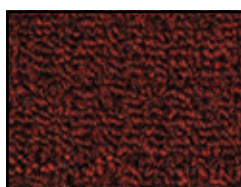
#22 BLACK



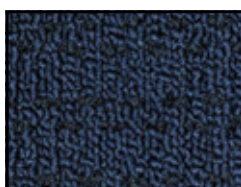
#25 GREY



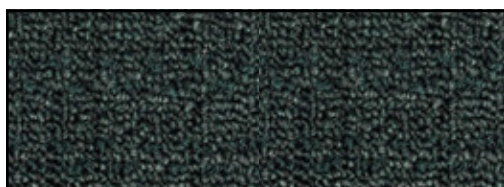
#27 BLACK GREY



#30 RED



#40 BLUE



#50 GREEN



edmonton  
vancouver  
toronto  
edgewoodgroup.ca

CALL FOR DETAILS OR TO REQUEST A SAMPLE

**1.800.668.1776**

P 780.466.2084 • F 780.468.9104  
E [inquiries@edgewoodgroup.ca](mailto:inquiries@edgewoodgroup.ca)

April 21, 2017